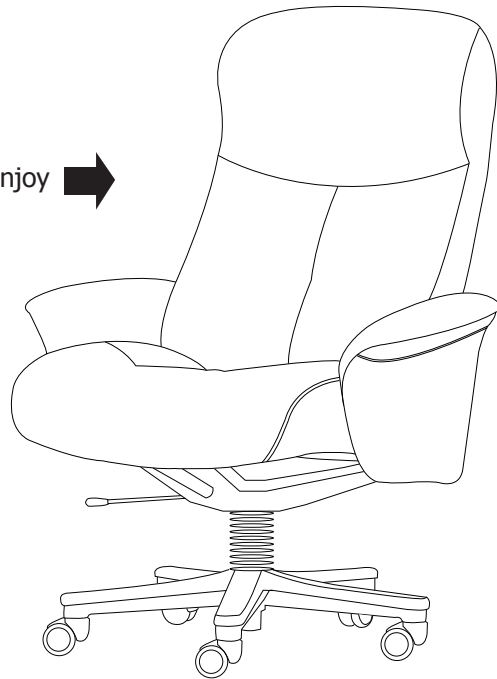


STEP 10: Attach seat to glider tube by inserting pin (VII) through hole and locking it into place by sliding on the clip spring (VI)







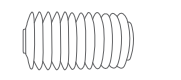

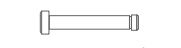
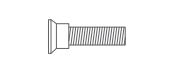
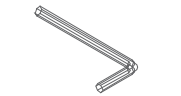
Congratulations your chair is ready to enjoy →



**IMG**  
N O R W A Y

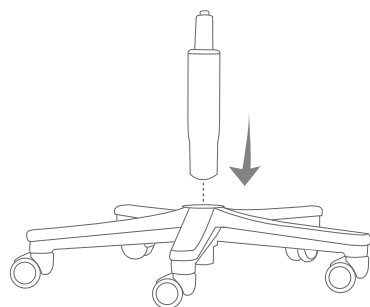
NB : Please check bolts for tightness every six months or as needed!

[www.imgcomfort.com](http://www.imgcomfort.com) • [office@imgcomfort.com](mailto:office@imgcomfort.com)

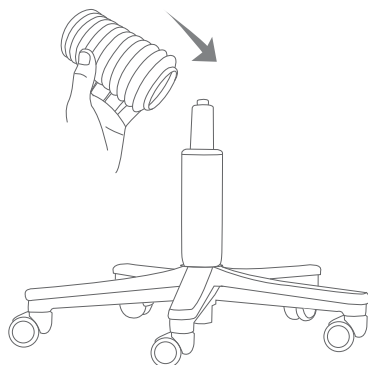
<p>I Body</p>  <p>x 1 set.</p>
<p>II Armrest</p>  <p>x 1 pair.</p>
<p>III Base</p>  <p>x 1 set.</p>
<p>IV Gas Lift</p>  <p>x 1 pc.</p>
<p>V Plastic Bellow</p>  <p>x 1 pc.</p>
<p>VI Clip spring</p>  <p>x 2 pcs.</p>
<p>VII Pin</p>  <p>x 1 pc.</p>
<p>VIII Screw M6</p>  <p>x 6 pcs.</p>
<p>IX Hex key</p>  <p>x 1 pc.</p>

## Assembling the soft part on to Soho base

**STEP 1:** Start by attaching the Gas Lift (IV) to the center of the base (III).



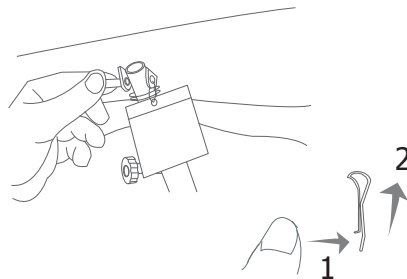
**STEP 2:** Place the Plastic Bellow (V) around the Gas Lift (IV).



**STEP 3:** Attach body (I) to the base by sliding it on to the gas lift.



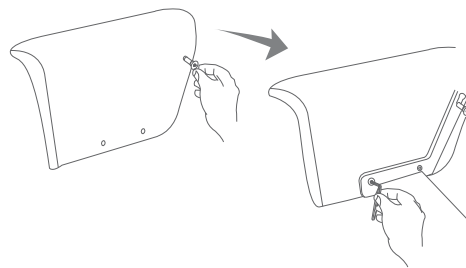
**STEP 4:** Take pin (VII) out by first sliding out clip spring. Take the seat off and place it on the floor.



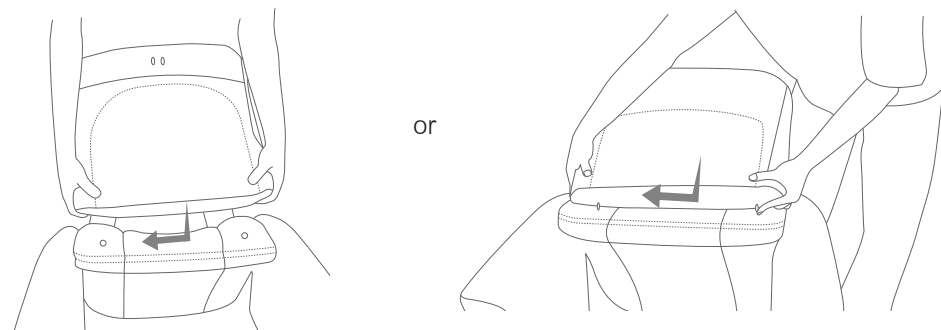
**STEP 5:** Turn backrest back to the floor.



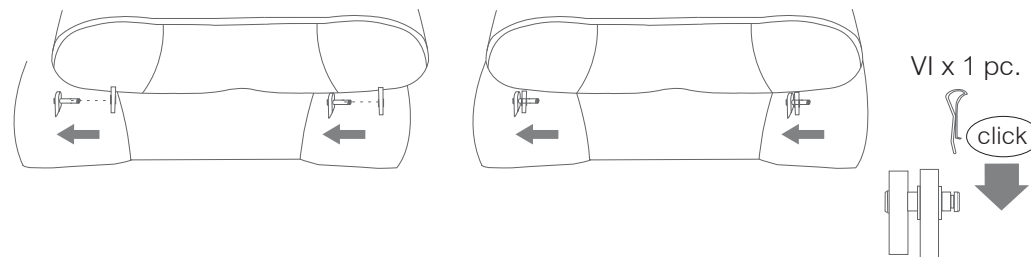
**STEP 6:** Attach armrest(II) by first entering one M6 screw (VIII) by a couple of turns only into top hole and sliding the arm into the slot on the frame. Screw in and tighten the next two M6 (VIII) screws before tightening the top screw again with hex key (IX).



**STEP 7:** Go behind the chair and hold the seat as shown in the drawings. Connect seat and back by either standing straight behind or on the side of the chair back.



**STEP 8:** Connect seat to backrest by sliding holes on seat onto pegs on backrest. Note: one peg is longer to make lining up holes easier. Fasten clip spring (VI) into slot on the short peg.



**STEP 9:** Fold seat/backrest assembled to upright position.

